



Annual Report **2014**



**Swan View** Senior High School

# Contents

Message from the Principal	1
Priority 1 : Academic Rigour	2
Priority 2 : High Standards of Student Engagement	3
Priority 3 : Community Pride and Promotion	4
Priority 4 : Staff Consistency	5
Testimonials	6
Highlights	7
Performance & Pathways Year 12	8
Performance and Progress NAPLAN	9
Financial Report	10



## Message from the Principal

It is an honor and privilege to present our community with the 2014 Annual Report for Swan View Senior High School.

Over the last twelve months SVSHS has gone **“from strength to strength”**, consolidating its significant improvements and planning for continued excellence into the future.

There has been a lot to celebrate and this annual report is simply a sample of the significant successes and contributions of staff and students.

One of the greatest achievements in 2014 was Swan View Senior High School gaining status as an “Independent Public School”. This status acknowledges the capacity of the school and community to make decisions at a local level that are the best ones for our students. It acknowledges the schools performance and its ability to continually improve, through self-assessment.

Swan View Senior High School welcomes the increased accountability and responsibility that we have as an Independent Public School and in a time of increased autonomy for schools.

As an Independent Public School we are able to develop a workforce profile that suits the needs and priorities of our school community. This means we can select our own staff, both teachers and support staff. Having the right people, in the right positions was a huge body of work that we undertook in 2014.

As we look towards the future we are confident that we will continue to provide students with an excellent education, world class opportunities, high quality teaching, learning and leadership.

As we move towards 2015 we will continue to focus on our four priorities of: Academic Rigour, High Standards of Student Engagement, Professional Excellence and Community Pride.

Please join with me in congratulating the Swan View Senior High School staff and students on their successes over the past year.

**Melesha Sands**  
Principal



Swan View  
SENIOR HIGH SCHOOL

## Academic Rigour (Priority One)

Swan View Senior High School is driven by a deep belief that every student is capable of successful learning. As a school we have high expectations of our students and what they are able to achieve, and see it as our role to give them the confidence, knowledge and opportunities to “Dream, Believe and Achieve” future goals.

Performance of our Senior School students continues to be a highlight with students performing well above like schools in almost all senior school measures. This is measured through ATAR scores, graduation statistics and attainment results. With an attainment rate of 93% in 2014 SVSHS can proudly say that our students leave secondary school with qualifications and achievements that make them competitive in the tertiary education, training and employment arenas.

“Follow the Dream (FTD)” and “Achieving Curriculum Excellence (ACE)” are two programs that are focused on supporting our students to achieve their academic potential.

These programs focus on identification, support and exposure to post school opportunities including University and Traineeships.

Partnerships with the University of Western Australia (ASPIRE), Curtin University (Curtin Link Up) and Edith Cowan University (AIME) provide our students with additional opportunities for success. In 2014 these programs were school wide and involved students from Years 8-12.

The last 12 months have seen teams of teachers working together to consolidate the implementation of Australian Curriculum and plan for the changes to WACE (Secondary

Graduation). These significant curriculum changes will see Swan View Senior High School course delivery be at a national standard, ensuring our students have the skills they need to be successful 21st Century citizens and life long learners.

### Highlights:

- A school attainment rate of 93 %, compared to the state average of 82%
- Record number of students entering an ATAR pathway in Year 11
- Development of a culture of high expectations for all students
- The Introduction of “Connect” an online learning environment that brings together teachers, students and families
- Continued competitive entry into Year 8, 9 and 10 ACE Program

### Future Commitments :

- Partnerships with local industry to develop scholarship opportunities
- Appointment of a Student Pathways coordinator to case manage and broker student opportunities for the future
- Introduction of Senior School Enrichment Program
- Assessment Literacy focus across the school
- Focus on inquiry and innovation in teaching practices



# High Standards of Student Engagement (Priority Two)

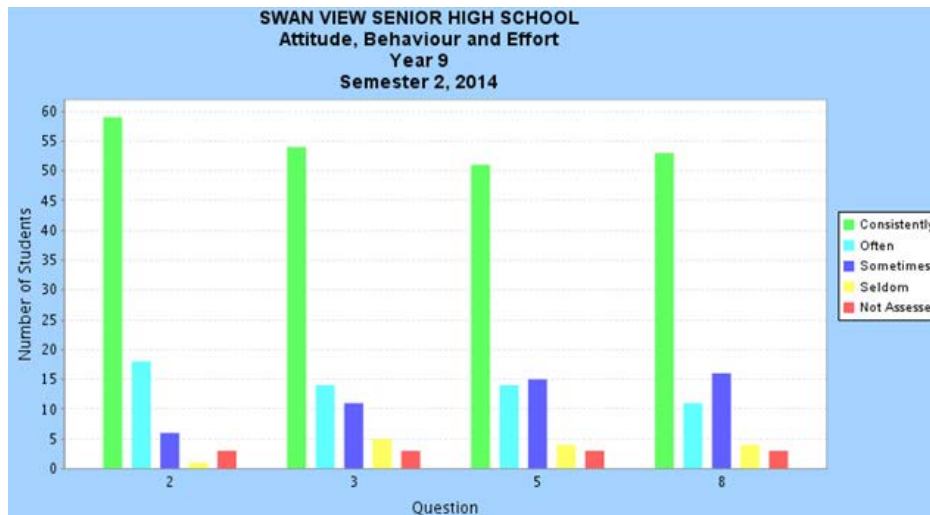
Student engagement encompasses three areas at SVSHS; Behaviour, Attendance and Cognitive Engagement (learning).

## Behaviour

Teachers at Swan View Senior High School are trained in the Classroom Management Strategies (CMS) and this contemporary approach is the foundation for policies and procedures relating to student engagement.

Analysis of suspension rates and categories indicate that the majority of the data is representative of students who have had repeat suspensions. Students identified as requiring targeted intervention have intensive case management and involvement of the North Metropolitan Student Engagement Team (SET).

The focus for the student services team is on student engagement and behaviour modification, with processes and procedures based on positive behaviour support.



- Q2. Shows self respect and care
- Q3. Shows courtesy and respect for the rights of others
- Q5. Cooperates productively and builds positive relationships
- Q8. Shows confidence in making positive choices and decisions

	Non - Aboriginal			Aboriginal			Total		
	School	Like Schools	WA Public Schools	School	Like Schools	WA Public Schools	School	Like Schools	WA Public Schools
2012	87.0%	84.7%	89.3%	79.2%	67.6%	67.9%	85.5%	82.0%	87.7%
2013	86.0%	85.7%	89.1%	73.3%	68.5%	67.2%	83.1%	82.9%	87.4%
2014	85.6%	85.6%	88.6%	68.9%	68.2%	66.3%	82.3%	82.7%	86.9%

## Attendance

Attendance continues to be a priority for Swan View Senior High School and the Department of Education. Students who attend regularly have a much greater chance of success into the future. In 2014 the WA Ombudsmen released a report into attendance and its links to student health and wellbeing.

Swan View Senior High School continues to perform on par with like schools, however there are some key priority areas for attendance focus into the future. This includes

Aboriginal student attendance and those in the severe at risk category. SVSHS continues to work closely with DoE regional and central teams to develop strategies to address these complex priorities.

### Highlights:

- Clontarf Academy opening with key foci of attendance and engagement
- Swan Hub attendance strategy and publications
- Increase in number of 100% attenders

### Future Commitments:

- Student Attendance Panels to be offered to families for students in severe and non-attendance
- Appointment of Student Support Coordinators to promote, acknowledge and reward regular attendance and student success
- Appointment of an Aboriginal Attendance and Community Liaison officer
- Full review of SVSHS Behaviour Management in Schools (BMIS) Policy
- Futures programs focusing on the health and wellbeing of our students

## Community Pride and Promotion (Priority Three)

Swan View Senior High School is committed to serving our community well, to providing excellent provision of educational programs and having a local community that is confident in our capacity to do so.

Throughout 2014 SVSHS has continued to focus on building a brand and reputation that reflects our school vision and ethos. The initial development of a marketing strategy has seen the launch of new newsletter, logo and publicity materials. The positive feedback from local businesses and partner primary school parents has been a highlight.

Partnerships with primary schools remain at the heart of community partnerships. The creation of a K-12 learning environment, with seamless transition between primary and secondary environments continues to be a focus. A critical component of this work is the Swan Extended Schools Hub (SESH). Members of this partnership include; Clayton View Primary School, Middle Swan Primary School, Swan View Primary School, Swan View Senior High School, The Smith Family, Fogarty Foundation and Department of Education. This partnership focuses on improved attendance and

transition. In 2014 involvement in SESH provided students with access to Certificate I in Financial Literacy, Athletics, Team Building and Leadership Activities.

Provision of specialist programs continues to be a strength of the school. Achieving Curriculum Excellence (ACE) continues to gain momentum with competitive entry in 2014. The FAME academy, Multimedia Art and Design (MAD) program, Basketball Academy and Motor V8 all provide students with the platform to develop and excel in their chosen field.

In 2015 Swan View Senior High School partnered with the Clontarf Foundation to launch an academy based at Swan View Senior High School. The Clontarf Academy focus to improve outcomes for male Aboriginal student based on the foundations of: Attendance, Leadership, Engagement, Employment and Sport. Since opening in April the academy has made significant impact to students' participation through community engagement programs, leadership programs and developing a sense of pride and involvement in the school community.

### Highlights:

- Achievement of Independent Public School status
- Year 7 and 8 enrolments 30% higher than expected
- Opening of the Clontarf Academy
- Active involvement in the Swan Extended School Hub (SESH) and Coalition of Midland Schools (COMS)
- Regular media coverage including three front page articles in local newspapers
- Showcase Assembly

### Future Commitments :

- Establishment of the inaugural IPS School Board with targeted community representation
- Revamp of Swan View Senior High School website
- Identification and nomination of staff in the 2015 Education Awards
- Development of data collection processes to guide brand and reputation development
- Development of formal sponsorship and scholarship opportunities with corporate partners



## Staff Consistency (Priority Four)

The Swan View students, parents and community value excellence in professional practice and this is a commitment made by the school to these stakeholders. Survey data indicates the number one priority for staff at SVSHS is a well-organized school with clear lines of communication and involvement in decision making.

Meeting structures across the school continues to be the basis for school decision making procedures, with a focus on transparency and accountability. These exist at all levels and in both formal and informal structures. Meetings promote positives and are centred around communication, decision making and professional learning.

Swan View Senior High School has procedures in place to encourage school-wide shared responsibility for student learning and success. All staff are supported to take on leadership roles outside of the classroom environment. Five teachers successfully attained Senior Teacher status, joining the 11 Senior Teachers already part of the staff. School support staff were encouraged to participate in leadership programs delivered through the Institute of Professional Learning and two were successful in completing this program, with each of them having leadership roles within the school.

As an Independent Public School the school took full advantage of its ability to select its own staff through merit selection processes. This resulted in the appointment of eight new teachers to the school each with expert knowledge, experience and a passion for making a difference to students at Swan View Senior High School. New staff were supported through formal and informal induction processes.

### Highlights:

- Increased online communication tools (Connect) to provide staff greater access to school information and documentation.
- Whole staff involvement in consultation and decision making relating to workforce management and school leadership structure
- Review of performance management practices and procedures
- Access and participation in online professional learning communities by teachers and leaders

### Future Commitments :

- Development of “lead teams” structure for school decision making processes
- Leadership professional learning program
- Review of Behaviour Management in Schools Policy
- Refinement of performance management processes with a focus on mentoring, coaching, classroom observations
- Utilisation of the AITSL Professional Standards for Teachers and School Leaders to guide teaching and leadership practices



## Testimonials



*Swan View Senior High School is a warm and friendly school that clearly exudes an interest in their students and the community. As Principal, you and your staff should be acknowledged and congratulated on such a high standard of manners, exceptional behaviour and admirable respect for other people, regardless of age or stature.*

**Director, Department of Education**

*All in all, my decision to send my children to Swan View Senior High School was the best decision my family and Jess have made.*

**J Barnes (parent of Year 9 female student)**

*My husband and I want to express our appreciation to your and your staff for supporting our son in his education over the last two years. When he arrived at Swan View SHS, he had already been at two high schools and had suffered a lot of bullying. Your school was the best thing for him at this time and we saw him, not only heal, but grown strong and confident.*

**A Geneve (parent of a Year 10 male student)**

*I wanted to ask what you are doing at that school, in 17 years of being in the area the kids you have got there are the best that they have ever been. They are polite, happy and considerate and I wanted to pass on this positive feedback from myself and my customers.*

**Local Business Owner**

*I would like to extend my thanks to the school community for the warm welcome I received when I officially opened the Clontarf Academy at Swan View Senior High School. I was impressed with the positive atmosphere and about the successes the academy has had since opening.*

*The engagement of student in their learning and the enthusiasm of staff at Swan View Senior High School is to be commended.*

**Hon Peter Collier, Minister for Education**

*Swan View Senior High School is second to none in providing a caring and supportive environment for students to attend. My students need your school, you do so much to help them and I recommend it without hesitation.*

**Principal, Local Primary School**

# Highlights

## Whole School Initiatives

Beach Carnival  
Senior School Ball  
NAIDOC Celebrations  
Academic Success Assembly  
Kaibara Japanese Exchange visit  
Aboriginal Awards Night  
Year 12 Dress Up Day  
Year 12 Graduation Evening

## Follow The Dream

International Young Leaders Day  
Ice Skating Excursion  
Sorry Day Excursion  
National Indigenous Youth Leadership Academy – Sydney Trip  
National Indigenous Youth Leadership Academy – Youth Leadership Conference  
King Hit Theatre

## Achieving Curriculum Excellence

Curtin Link Up Program  
Aspire University Program (UWA)  
Race around the campus events  
ACE Exams

## Career Development

Career Expo  
AIME Partnership  
ABCN Aspirations  
WACE 2016 Parent Evenings  
World of Work (WOW) Program  
Aboriginal School Based Training Program  
Work Experience Program

## Student Support & Well Being

Seen and Heard BBQ  
First Aid Training  
The Happiness Cycle Program  
Footy Colour Friday (Cancer Awareness)

## FAME – Specialist Drama

Grease “The Musical” Excursion  
School Production “Anybody for Murder”  
Black Swan Theatre – 3 shows  
Bookweek primary school tour  
Fame Circus Spectacular

## Partner Primary School Events

Harmony Day Basketball Carnival  
Showcase Assembly  
ACE Launch  
Parent night and tours

## Community Partnerships

Volunteer Reading Program  
Volunteer Mentoring Program  
Harmony Day Basketball Carnival  
Middle Swan PS Open Day  
Perth Airport – Plant rehabilitation Project

## Leadership

GRIP Leadership Conference (SRC)  
West Coast Eagles Leadership Program  
Student Representative Council Camp

## Clontarf Academy

Academy Opening  
Induction Camp – Bunbury  
Leadership Camp – Geraldton  
Leaders Trip – Sydney  
Community Engagement Activities –  
Bunnings, Fire Station, Conservation  
Volunteers  
“King Hit” Theatre Production  
AFL Indigenous Round  
Good Bunch Lunches  
Midwest Cup

## Mathematics and Science

Australian Mathematics Competition  
Mathletics  
Certificate I in Financial Literacy  
After school Mathematics  
Science Club

## Humanities

Book Week Visit  
Public Speaking Competition

## The Arts

Arts Showcase & Awards Night  
Drama -Year 11 & 12 Performance Night  
Dance – Excursion  
Media – Young Directors Festival  
- Smarter Than Smoking grant  
Visual Arts – WA Art Gallery Excursion  
- Art Exhibition

## Technology and Enterprise

Home Economics Expo  
Motor V8 Program  
Pedal Prix – Busselton

## Health and Physical Education

Specialist Basketball Program  
-wheelchair basketball  
-senior school sport basketball team  
Outdoor Education Expeditions  
WA Touch Rugby Tournament &  
Specialised Coaching  
Year 10 Lightning Carnival  
Year 9 Lightning Carnival  
Year 8 Lightning Carnival  
Keys for Life Program  
Paralegic Benefit Fund and RAC Guest  
Speakers  
Health Expo

## Education Support & Access

Swan Valley Excursion

# Performance & Pathways Year 12

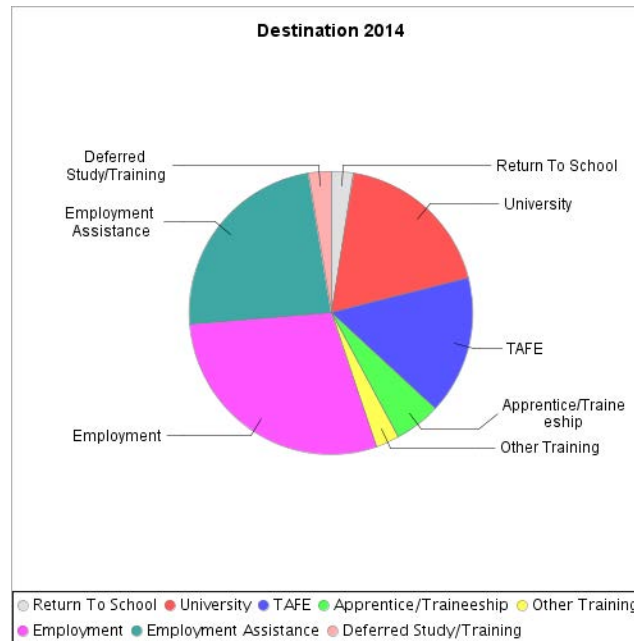
Success for all students is the driver for our school planning, commitments and actions we undertake. This success becomes more important as students leave our school and move into the community as active and contributing citizens. SVSHS continues to have high expectations for graduating students and are uncompromising in the focus on quality post school pathways (education, training and employment).

In 2014 the Year 12 cohort was 31 students, due to the half cohort completing their secondary education. There were two students who completed their ATAR through traditional courses of study pathway.

For the remaining students qualifications at Certificate II level and above were the focus, preparing them for competitive TAFE entry and employment. SVSHS attainment rate continued to rise from 80% to 93% (state average 82%).

The graduation rate was 93%, representative of one student not successfully achieving language competency in English.

The destination data for the 2014 Year 12 cohort is represented in the Destination Graph.



## FUTURE COMMITMENTS

Success for the future will remain a priority. The introduction of WACE 2016 will provide SVSHS with some challenges and planning is underway to ensure our students have the greatest opportunity for success. Initiatives include:

- Appointment of a Student Pathways Coordinator
- Targeting resourcing and intervention for OLNA
- Introduction of "Futures" program focusing on career development and career skills in Years 9-12



# Performance and Progress NAPLAN

NAPLAN data provides the school with important information about student performance (achievement and progress) at a particular point in time. At Swan View Senior High School the analysis and use of data is a high priority. This analysis enables us to evaluate both school and student performance especially in the areas of literacy and numeracy.

## Achievement

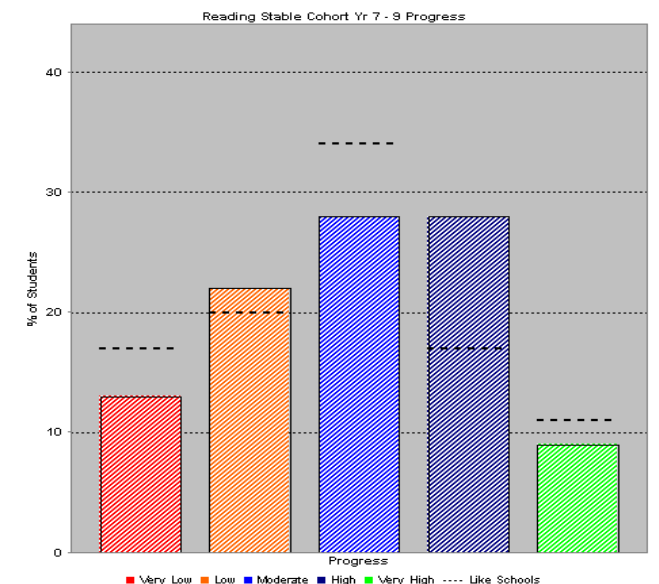
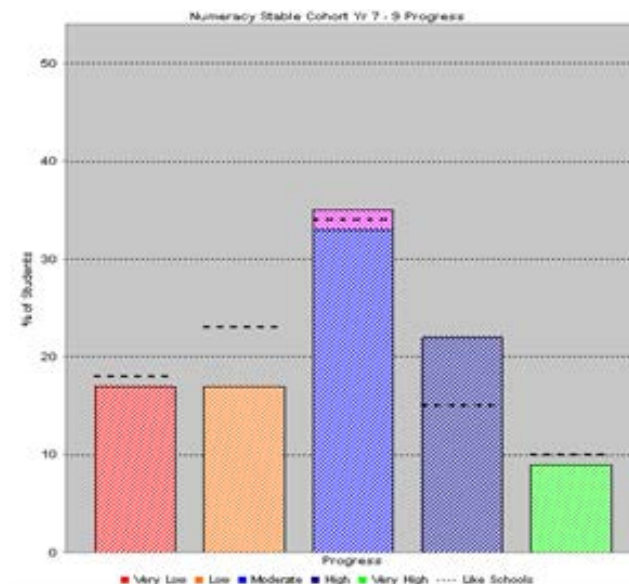
Swan View Senior High School continues to achieve as expected in NAPLAN performance across all outcomes. This can be attributed to a continued focus on literacy and numeracy through utilisation of DoE teaching and learning resources and the implementation of the “Soundway Program.”

Year 9	Performance					
	2009	2010	2011	2012	2013	2014
Numeracy	2	2	2	2	2	2
Grammar & Punctuation	2	2	2	2	2	2
Reading	2	2	2	2	2	2
Spelling	2	1	1	2	2	2
Writing	2	2	3	2	2	2

## Progress

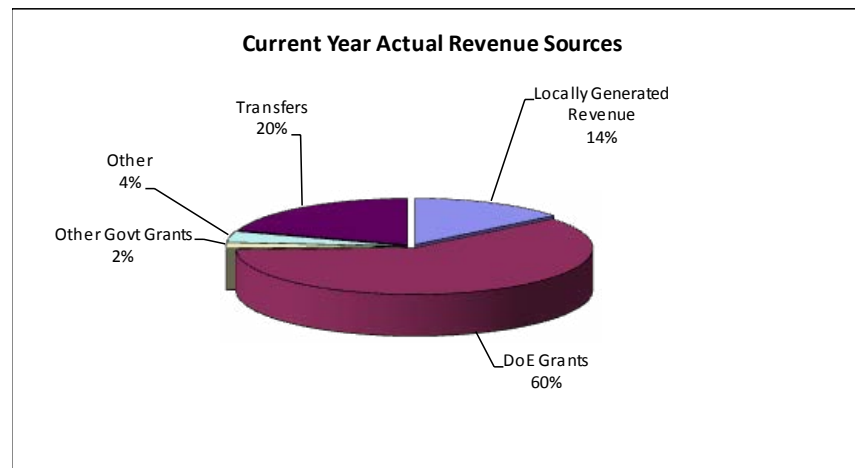
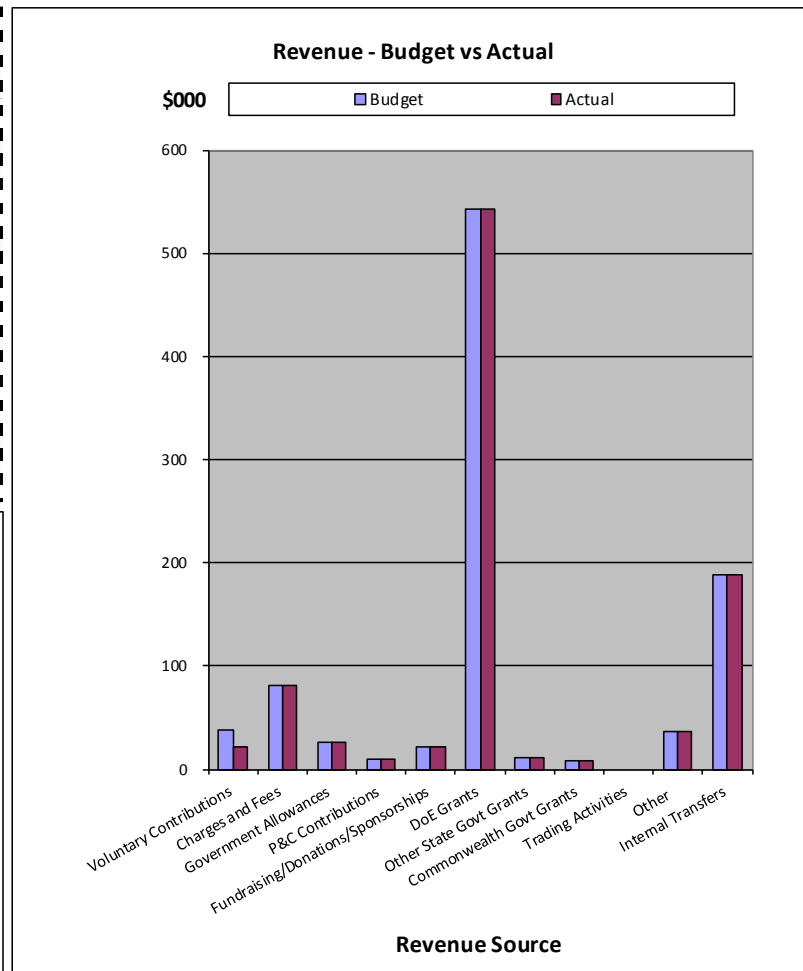
The difference SVSHS makes to students can be measured by “progress” data. This is the amount of progress students have made between Years 7-9 in their NAPLAN scores and is referred to as “value adding”.

SVSHS continues to outperform like schools in the areas of very high and high progress. Strategies that have contributed to this success include; procedures for test administration, implementation of the Australian Curriculum in Year 9, targeted extension for the Achieving Curriculum Excellence (ACE) students and teacher utilisation of SAIS data to modify and target classroom instruction.

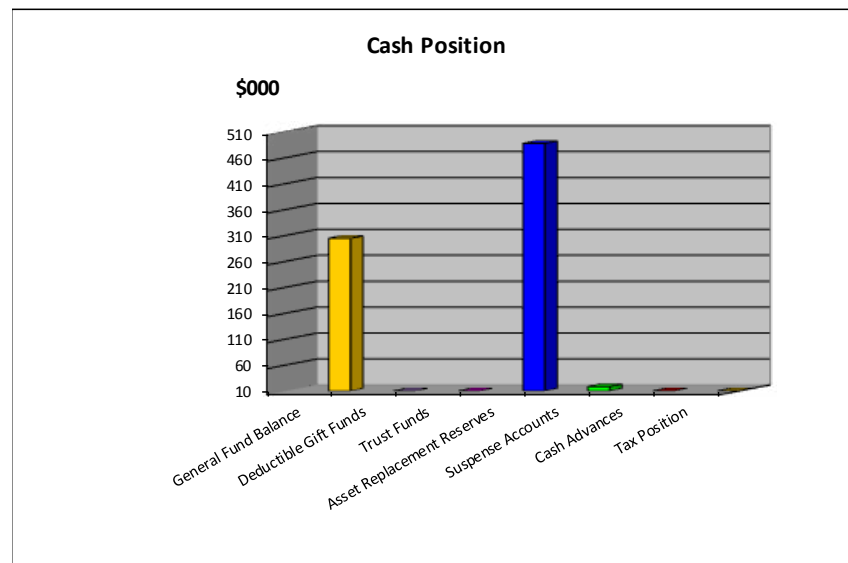
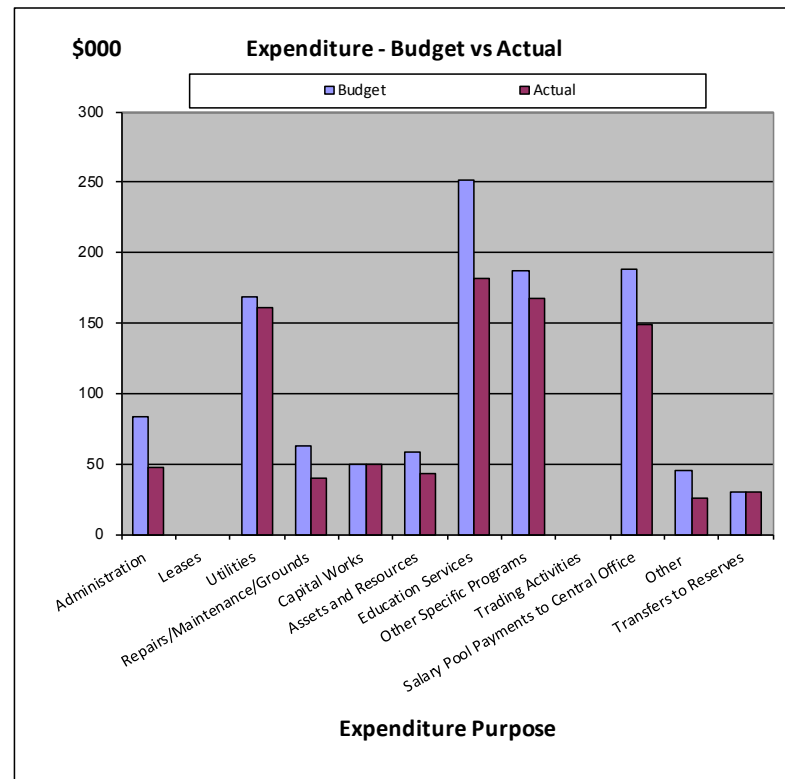


## Swan View Senior High School Financial Summary as at 31 December 2014

	Revenue - Cash	Budget	Actual
1	Voluntary Contributions	\$ 38,634.00	\$ 21,286.20
2	Charges and Fees	\$ 81,370.00	\$ 80,937.97
3	Government Allowances	\$ 25,937.00	\$ 25,937.00
4	P&C Contributions	\$ 10,000.00	\$ 10,000.00
5	Fundraising/Donations/Sponsorships	\$ 22,265.82	\$ 22,241.55
6	DoE Grants	\$ 542,345.18	\$ 542,344.54
7	Other State Govt Grants	\$ 10,771.00	\$ 10,771.00
8	Commonwealth Govt Grants	\$ 7,609.00	\$ 7,608.95
9	Trading Activities	\$ -	\$ -
10	Other	\$ 35,971.00	\$ 35,972.59
11	Internal Transfers	\$ 188,808.00	\$ 188,808.00
	<b>Total</b>	<b>\$ 963,711.00</b>	<b>\$ 945,907.80</b>
	<b>Opening Balance</b>	<b>\$ 252,839.00</b>	<b>\$ 252,838.65</b>
	<b>Total Funds Available</b>	<b>\$ 1,216,550.00</b>	<b>\$ 1,198,746.45</b>



	Expenditure	Budget	Actual
1	Administration	\$ 83,699.00	\$ 47,034.51
2	Leases	\$ -	\$ -
3	Utilities	\$ 168,077.00	\$ 160,490.43
4	Repairs/Maintenance/Grounds	\$ 62,272.00	\$ 39,450.86
5	Capital Works	\$ 49,875.00	\$ 49,874.77
6	Assets and Resources	\$ 58,735.00	\$ 42,787.05
7	Education Services	\$ 251,601.00	\$ 181,969.65
8	Other Specific Programs	\$ 187,276.00	\$ 167,873.89
9	Trading Activities	\$ -	\$ -
10	Salary Pool Payments to Central Office	\$ 188,533.00	\$ 148,800.00
11	Other	\$ 44,849.00	\$ 25,636.88
12	Transfers to Reserves	\$ 30,350.00	\$ 30,350.00
	<b>Total</b>	<b>\$ 1,125,267.00</b>	<b>\$ 894,268.04</b>



Cash Position as at:	
Bank Balance	\$ 807,268.43
Made up of:	
1 General Fund Balance	\$ 304,478.41
2 Deductible Gift Funds	\$ -
3 Trust Funds	\$ -
4 Asset Replacement Reserves	\$ 487,545.69
5 Suspense Accounts	\$ 18,513.33
6 Cash Advances	\$ 400.00
7 Tax Position	\$ 2,869.00
<b>Total Bank Balance</b>	<b>\$ 807,268.43</b>

**Other financial information**

Voluntary contributions collection rate	57.9%	Total creditors as at: 31/12/2014	\$43,290
Total bad debts written off for the year	\$13,642	Total Debtors as at: 31/12/2014	\$25,449
Total assets/resources written off for the year	\$0	Total value of new leases for the year	\$0

A brief comment on the financial performance for the year:

## FUTURE COMMITMENTS

Academic Rigour will continue to be a school priority in the 2015-2017 Business Plan and literacy and numeracy underpin this very important work.

Strategies to maintain success in this area include:

- A strong commitment by teachers and leaders to continuous improvement in teaching and learning practices in reading, writing, mathematics and science
- Professional learning activities are high quality and focused on literacy and numeracy
- Recruitment and selection of staff with expertise and qualifications in literacy learning
- Introduction of Learning Support Class to support students with specialised literacy needs
- Achieving Curriculum Excellence – Literacy enhancement program to support top students to reach their potential through targeted teaching





**SWAN VIEW**

**SENIOR HIGH SCHOOL**



# Swan View

SENIOR HIGH SCHOOL

Gladstone Avenue SWAN VIEW Western Australia 6056

**Telephone** (08) 9294 0100 **Facsimile** (08) 9294 4122

**Email** [Melesha.Sands@education.wa.edu.au](mailto:Melesha.Sands@education.wa.edu.au)

**[www.svshs.wa.edu.au](http://www.svshs.wa.edu.au)**